

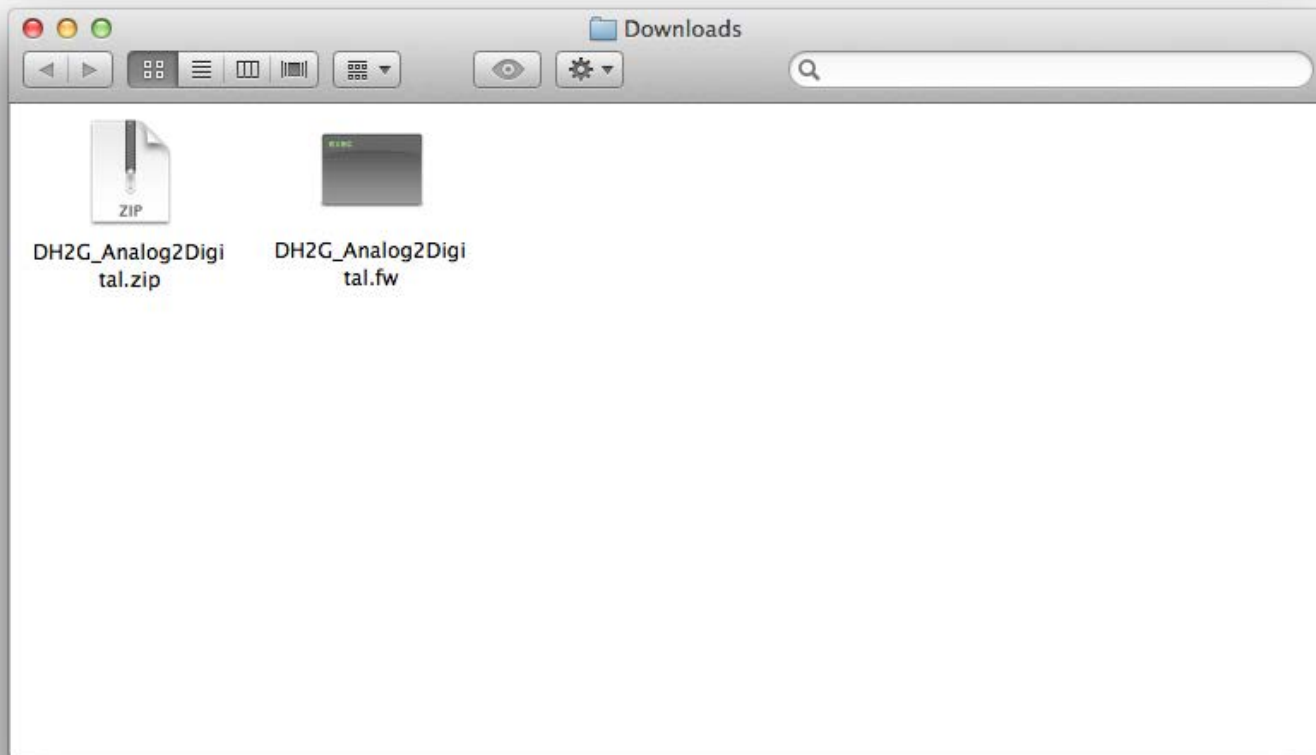
Using Matrox DualHead2Go Digital Edition with Matrox Convert DVI products on Mac

Follow this one-time procedure to convert your DualHead2Go Digital Edition to an analog to digital converter.

(Note that only DVI output 1 from the Dualhead2Go will be enabled)

1. Download and install Matrox PowerDesk for Mac (version 1.03.00.003 or newer) from the Matrox Graphics Technical Support Web site (<http://www.matrox.com/graphics/en/support/drivers/>).
2. Download the firmware update file from the Convert DVI "Utilities" folder of the Matrox Video Web site (<http://www.matrox.com/video/en/support/downloads/>).

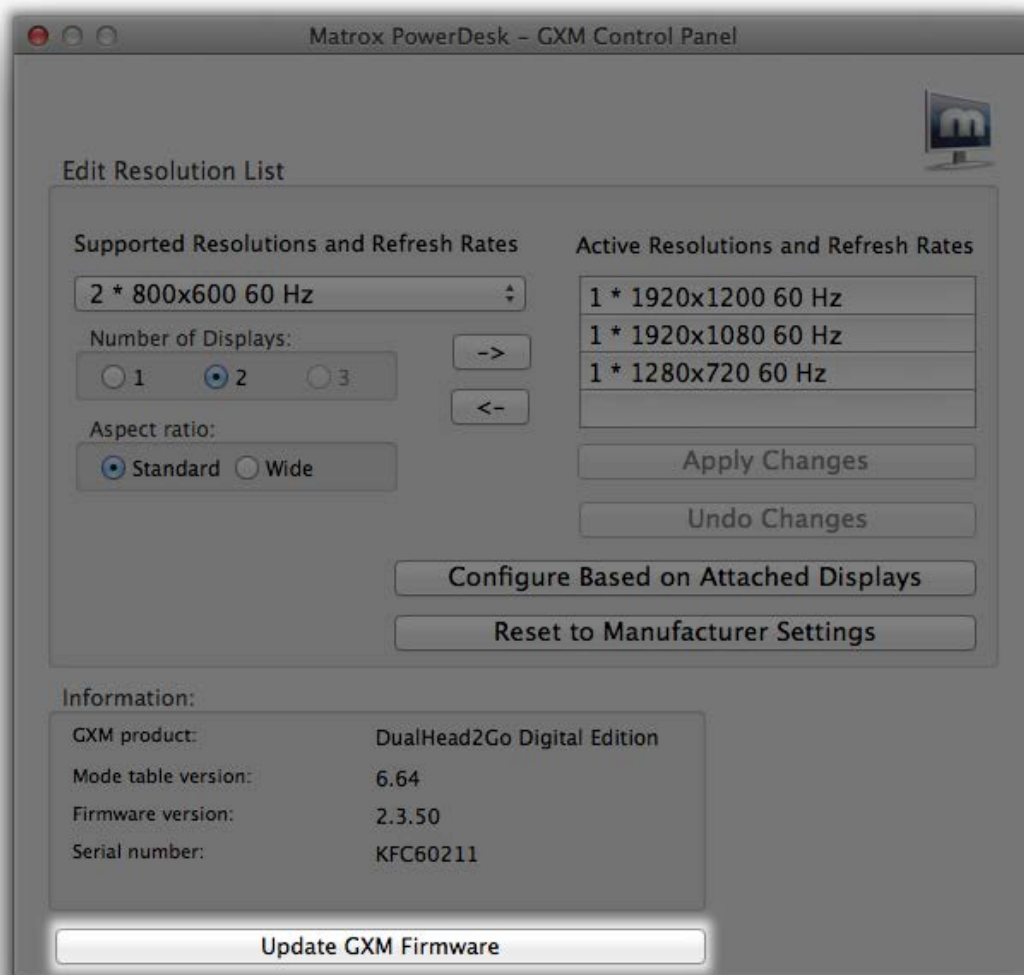
3. Double-click the ZIP file to extract the FW file to the same folder:



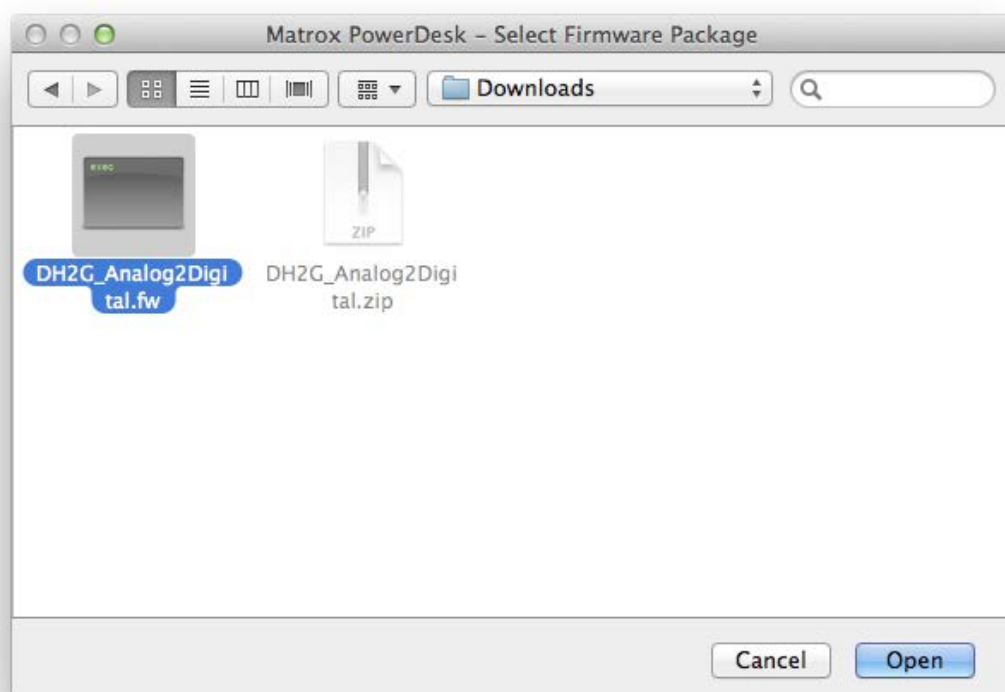
4. From the Matrox PowerDesk menu, select **Open Matrox GXM Control Panel**:



5. Click **Update GXM Firmware**:



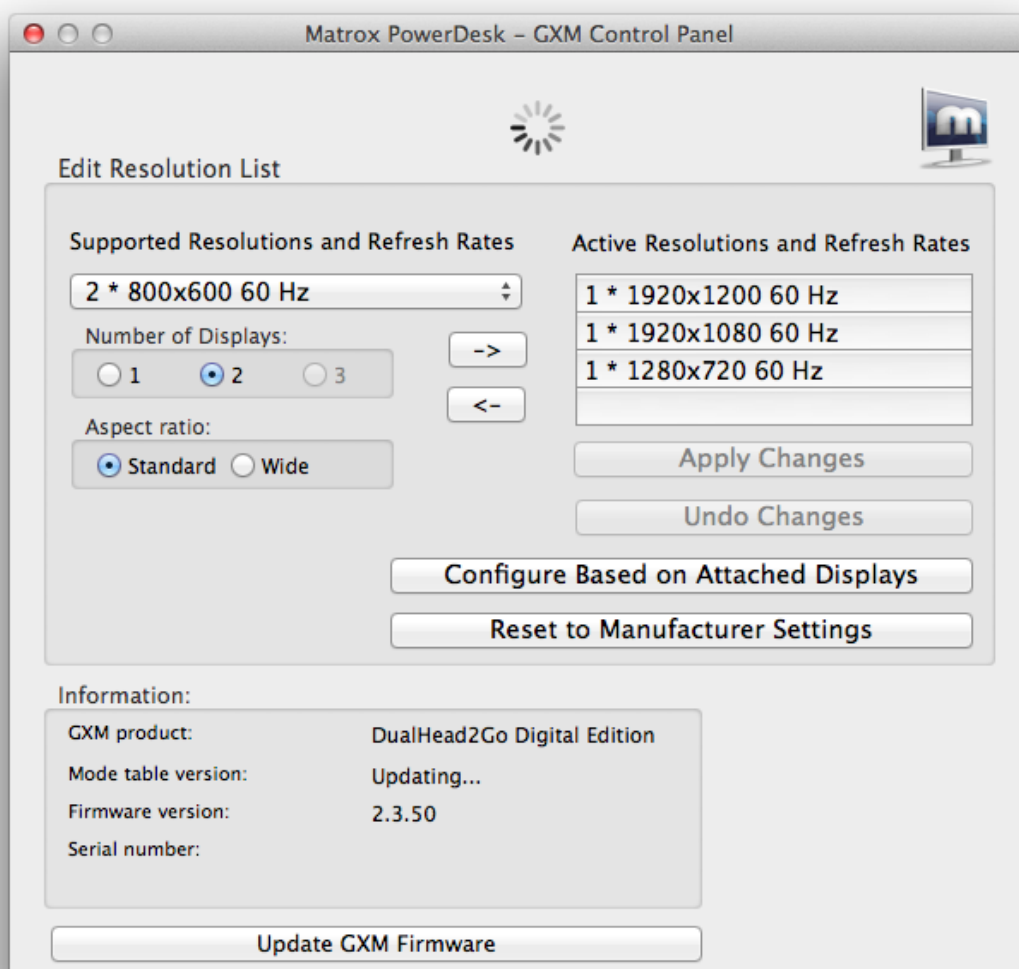
6. Browse to the folder containing the update file, then click **Open**:



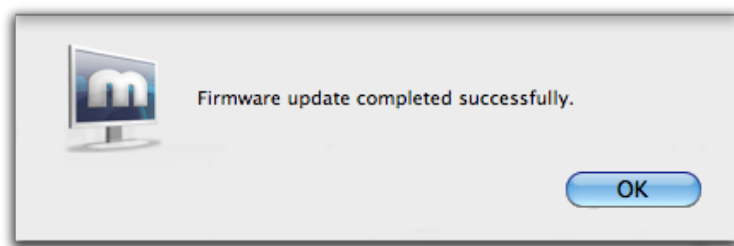
7. Carefully read the information in the confirmation dialog, then click **Update Firmware** to continue with the update:



8. Wait for PowerDesk to finish updating your Matrox GXM product firmware:



9. Click **OK** when the update is complete.



Your DualHead2Go Digital Edition is now configured as an analog to digital converter for use with the Matrox Convert DVI family of products. Note that only **output 1** of the DualHead2Go is enabled.

After following this one-time procedure, connect the VGA cable from your computer to the DualHead2Go Digital Edition and connect the DVI input of the Convert DVI to the DualHead2Go's first DVI output.

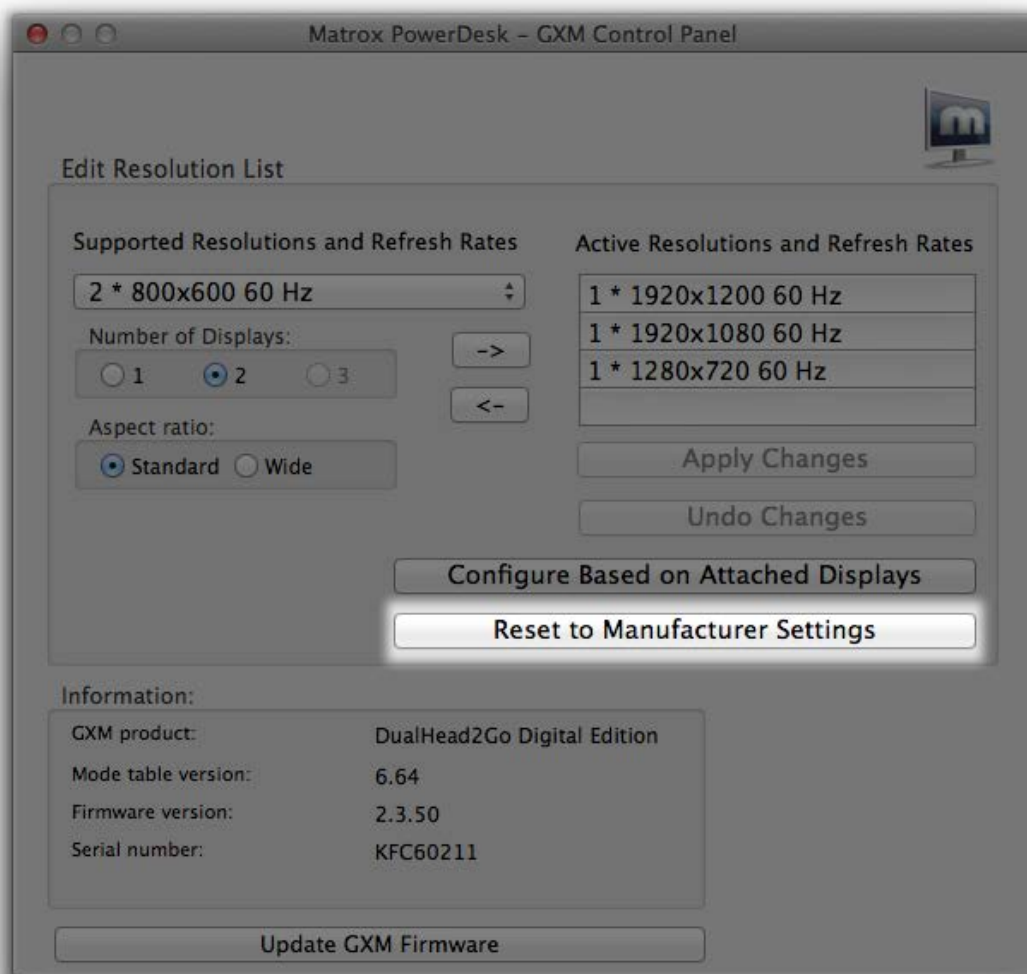
You will need to connect the DualHead2Go's USB cable to a computer to power the device. To use the device independently from the computer, you can purchase a separate power supply kit here: <http://shopmatrox.com/usa/products/datasheet.asp?ID=864>

To reset the DualHead2Go back to its original settings:

1. From the Matrox PowerDesk menu, select **Open Matrox GXM Control Panel**:



2. Click **Reset to Manufacturer Settings**:



Your DualHead2Go Digital Edition is now back to its original settings.