

# Matrox Epica TC20+ & Epica TC48 for Dell Wyse Z90DE7 thin clients



## High Performance Dell Wyse Thin Client Leverages Epica Series Graphics Cards to Deliver up to Six Outputs

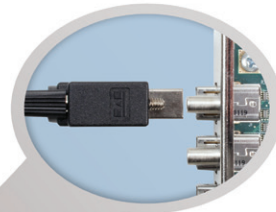
The Matrox Epica TC20+ and Epica TC48 are ultra-compact graphics cards for cloud computing environments offering low power consumption, passive cooling, and superior multi-display capabilities that can be driven by a single thin client system. Designed exclusively for the Dell Wyse Z90DE7 thin client, the Epica TC20+ supports two digital or analog monitors—and up to four analog displays with a quad-enabling cable option—while the Epica TC48 supports up to four DVI or DisplayPort™ monitors. The TC20+ or TC48 card's outputs can be added to the native GPU outputs on the Z90DE7 to achieve an unprecedented 6 outputs from the thin client with most graphics settings controlled via Matrox's PowerDesk software. The co-certified thin client solution maintains excellent energy efficiency and thermal properties, while providing users with the optimal on-screen workspace in the most demanding virtual desktop environments.

### Key Features:

- Passive cooling and low power consumption increases product reliability and eliminates noise
- Meets Dell Wyse thermal output specifications and co-certified by Dell Wyse and Matrox
- TC20+ and TC48 add to existing outputs for as many as six displays from the Z90DE7
- Stretched and independent desktop modes offer flexible configuration options
- Native PCI Express® interface for maximum bandwidth and performance
- Matrox PowerDesk software supports many features of multi-GPU configuration from a single GUI including:
  - Resolution support
  - Refresh rate
  - Orientation
  - Desktop management
  - Color palette
  - Window Management



*The Dell Wyse Z90DE7 and Matrox Epica TC20+ or TC48 combination significantly improves the number of displays and screen real estate available under virtual desktop infrastructure (VDI) and allows interaction and visibility never before seen in such a thermal and energy efficient thin client.*



Mini DisplayPort locking thumbscrew secures cable in place.

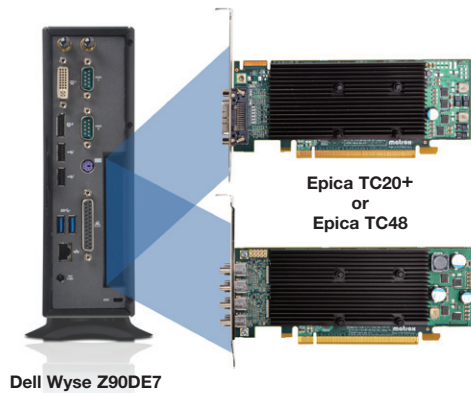
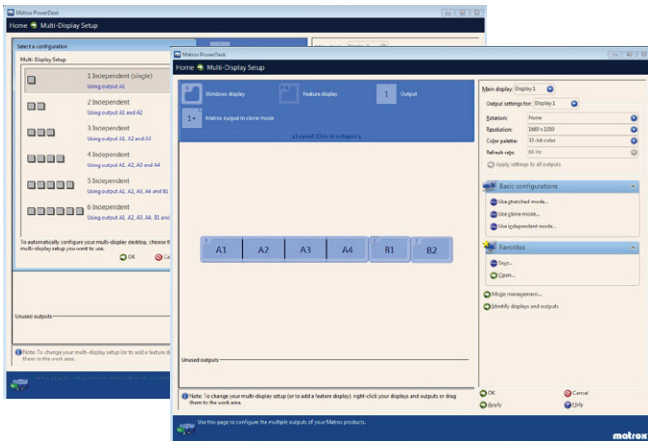
	Matrox Epica TC20+	Matrox Epica TC48
Part Number	EPI-TC20ELAUF	EPI-TC48ELAF
Passive Cooling & Low Power Consumption	Yes	Yes
Independent & Stretched Desktop Mode	Yes	Yes
Max Digital Resolution per Output	1920x1200 and 2048x1152	1920x1200 and 2048x1152
Max Analog Resolution per Output	2048x1536 (1920x1200 with quad analog upgrade cable)	—
Max Display Outputs per Card	2 (4 with quad analog upgrade cable)	4
Max Display Outputs per Thin Client	4 (6 with quad analog upgrade cable)	6
Upgrade Option to Four Monitors (sold separately)	Quad analog upgrade cable (Part # CAB-L60-4XAF)	—
Graphics Memory	512MB	1024MB
Bus Type	PCIe (x16)	PCIe (x16)
Card Dimensions	6.6" (L) x 2.7" (H)	6.6" (L) x 2.7" (H)
PowerDesk Software, Unified Driver Package	Yes	Yes
Breakout / Splitter Cables Included	LFH-60 to 2 x DVI-I	4x Mini DisplayPort to DisplayPort
Mini DisplayPort Locking Thumbscrew	—	Yes
DVI to Analog (HD15) Adapters	2	—
Supported Display Output Types	DVI SL, Analog	DisplayPort, DVI SL
Card Form Factor (PCB / bracket)	LP / ATX	LP / ATX
Supported Operating Systems	Windows® Embedded Standard 7	Windows® Embedded Standard 7
Warranty	3 years	3 years

### More to See and Do with Matrox PowerDesk

Matrox PowerDesk software supports many of the key software management features it supports for Matrox alone in the Z90DE7's multi GPU vendor environment. Multi-display features such as Multi-Display Management, Rotation, Resolution Support, Color Depth, Refresh rate, and Mode Management are supported for all displays — in a single, easy-to-use and convenient GUI.

### Matrox Epica Series & Dell Wyse Z90DE7 – A Nice Fit.

The Dell Wyse Z90DE7 is a super high-performance, expandable Windows Embedded Standard 7 thin client for virtual desktop environments. It delivers with great speed and power demanding embedded custom Windows applications, rich graphics and HD multimedia that can be displayed on up to 6 screens, using the Matrox Epica TC20+ or TC48 multi-display graphics cards.



### Learn More or Purchase

North America: 800-361-1408  
International: 514-822-6366  
Email: [graphics@matrox.com](mailto:graphics@matrox.com)

PCI EXPRESS® and PCIe® are registered trademarks of PCI-SIG. Windows is a registered trademark of Microsoft Corporation in the United States and other countries. © 2012 Matrox Graphics, Inc. All rights reserved. Matrox reserves the right to change specifications without notice. Matrox and Matrox product names are registered trademarks in Canada or other countries and/or trademarks of Matrox Electronic Systems, Ltd and/or Matrox Graphics Inc. All other company and product names are registered trademarks and/or trademarks of their respective owners.

September 2012

**matrox**<sup>®</sup>  
Graphics for Professionals