

Matrox RT.X2

Quick Installation Guide

May 8, 2006



Y10977-101-0100

Trademarks • Marques déposées • Warenzeichen • Marchi registrati • Marcas registradas

Matrox Electronic Systems Ltd. Matrox[®], Mx.tools[™], RT.X2[™]
Adobe Systems Inc. Adobe[®], After Effects[®], Photoshop[®], Premiere[®]
Microsoft Corporation Microsoft[®], Windows[®]

• (English) All other nationally and internationally recognized trademarks and tradenames are hereby acknowledged. • (Français) Toutes les autres marques et tous les autres noms déposés reconnus nationalement ou internationalement sont également reconnus par les présentes. • (Deutsch) Alle sonstigen national und international bekannten Warenzeichen und Produktnamen werden hiermit anerkannt. • (Italiano) Eventuali altri nomi di prodotto menzionati in questo manuale sono dei proprietà di rispettivi produttori. • (Español) Por medio del presente se reconocen todas las demás marcas y nombres comerciales reconocidos a nivel nacional e internacional.

Copyright © 2006 Matrox Electronic Systems Ltd. • (English) All rights reserved. • (Français) Tous droits réservés. • (Deutsch) Alle Rechte vorbehalten. • (Italiano) Tutti i diritti riservati. • (Español) Reservados todos los derechos.

Disclaimer Matrox Electronic Systems Ltd. reserves the right to make changes in specifications at any time and without notice. The information provided by this document is believed to be accurate and reliable. However, no responsibility is assumed by Matrox Electronic Systems Ltd. for its use; nor for any infringements of patents or other rights of third parties resulting from its use. No license is granted under any patents or patent rights of Matrox Electronic Systems Ltd.

Unauthorized recording or use of broadcast television programming, video tape, or other copyrighted material may violate copyright laws. Matrox Electronic Systems Ltd. assumes no responsibility for the illegal duplication, use, or other acts that infringe on the rights of copyright owners.

Matrox Electronic Systems Ltd.

1055 St. Regis Blvd., Dorval, Quebec, Canada H9P 2T4

Tel: (514) 685-2630 Fax: (514) 685-2853 World Wide Web: www.matrox.com

Contents

About this guide	1
Installing your Matrox RT.X2 card	1
Connecting your external devices	2
Connecting your RT.X2 breakout box.....	2
Connecting your DVI video monitor	4
DV-1394 connections.....	5
Installing your Matrox RT.X2 software	6
Registration and customer support	6
Contacting us	6

Your notes

About this guide

This guide provides brief installation instructions for installing your Matrox RT.X2 hardware and software. It is intended to help you quickly set up your Matrox RT.X2 system. For detailed installation instructions, please refer to your *Matrox RT.X2 Installation Manual*.

Installing your Matrox RT.X2 card

Before installing your Matrox RT.X2 card, drain static electricity from your body by touching a bare metal surface on your computer chassis. If you have a grounding wrist strap, use it while handling and installing any components in your computer.

To determine the particular slot in which you should install your RT.X2 card for recommended systems and motherboards, see the Matrox Video Support site at www.matrox.com/video/support.

⇒ To install your RT.X2 card:

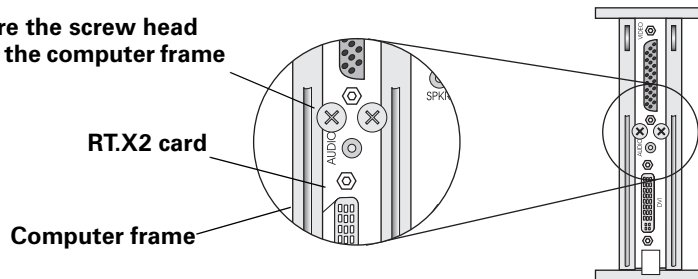
- 1 Turn off your computer, unplug it, and then remove its cover.
- 2 Remove the metal plate located at the back of the PCI Express slot you'll be using for your RT.X2 card. Save the screws for the mounting bracket.
- 3 Position your RT.X2 card over the chosen slot and push the card in firmly and evenly until it is fully seated in the slot.
- 4 Using the fasten screws you removed in step 2, secure your RT.X2 card to the computer frame.
- 5 Connect the male end of the internal power supply cable on your RT.X2 card to a free power outlet of your computer's internal power supply.



Important Make sure that no other devices are sharing this power outlet.

- 6 Replace your computer's cover.
- 7 Using the two small screws provided with your RT.X2 card, secure the RT.X2 bracket to the computer frame as shown below. This step is crucial in making your RT.X2 card FCC compliant.

Make sure the screw head overlaps the computer frame



Connecting your external devices

Before restarting your computer, you must connect your external devices such as your Matrox RT.X2 breakout box, DVI monitor, VTRs, and DV camcorder.

Connecting your RT.X2 breakout box

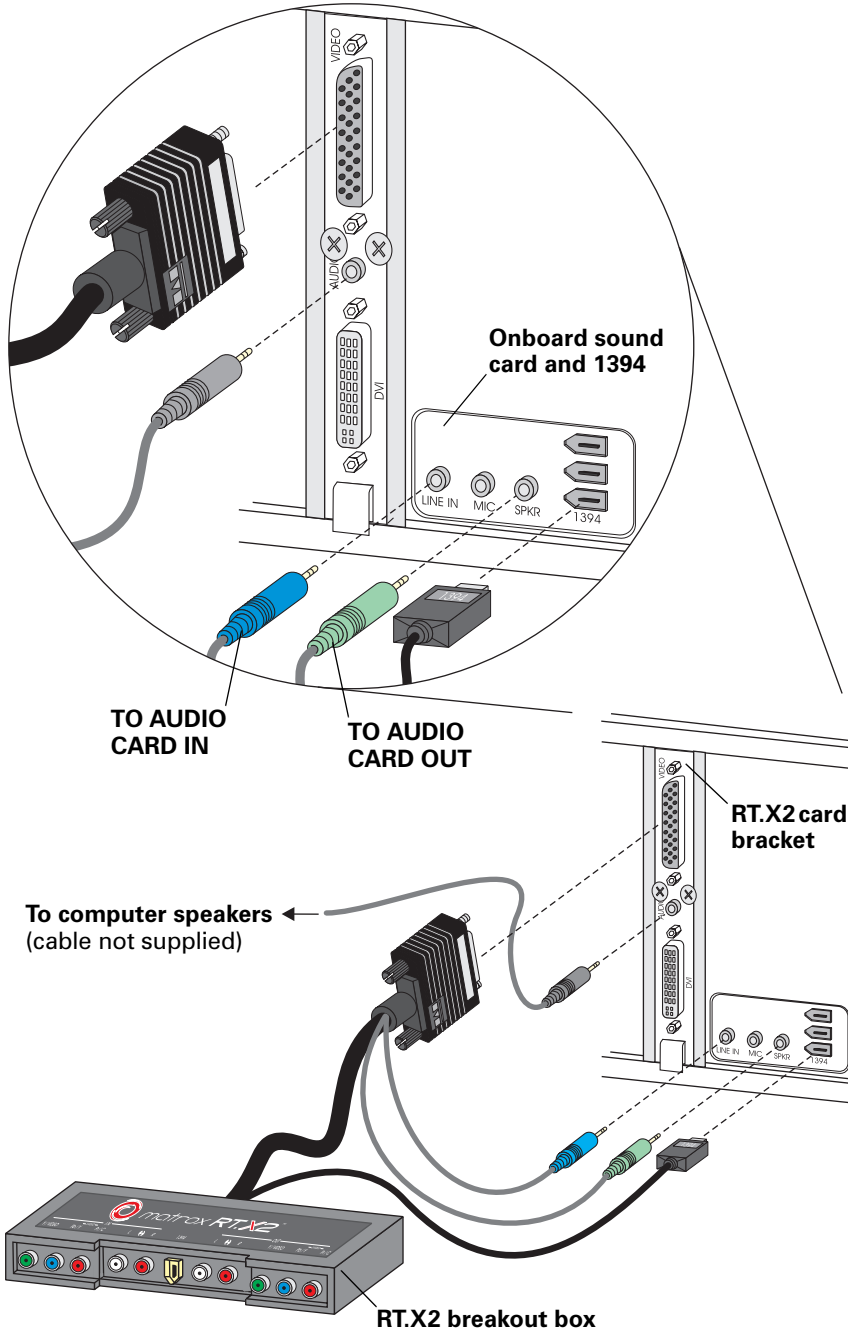
- 1 Connect the RT.X2 video cable from the back of the RT.X2 breakout box to the VIDEO connector on your installed RT.X2 card. Tighten the thumb screws until snug to ensure a stable connection.



Caution Use extra care when attaching the video cable as bent pins can cause your Matrox RT.X2 system to not perform properly. Also, do not bend the cable too sharply. Excessive bending or flexing can damage internal, shielded wires.

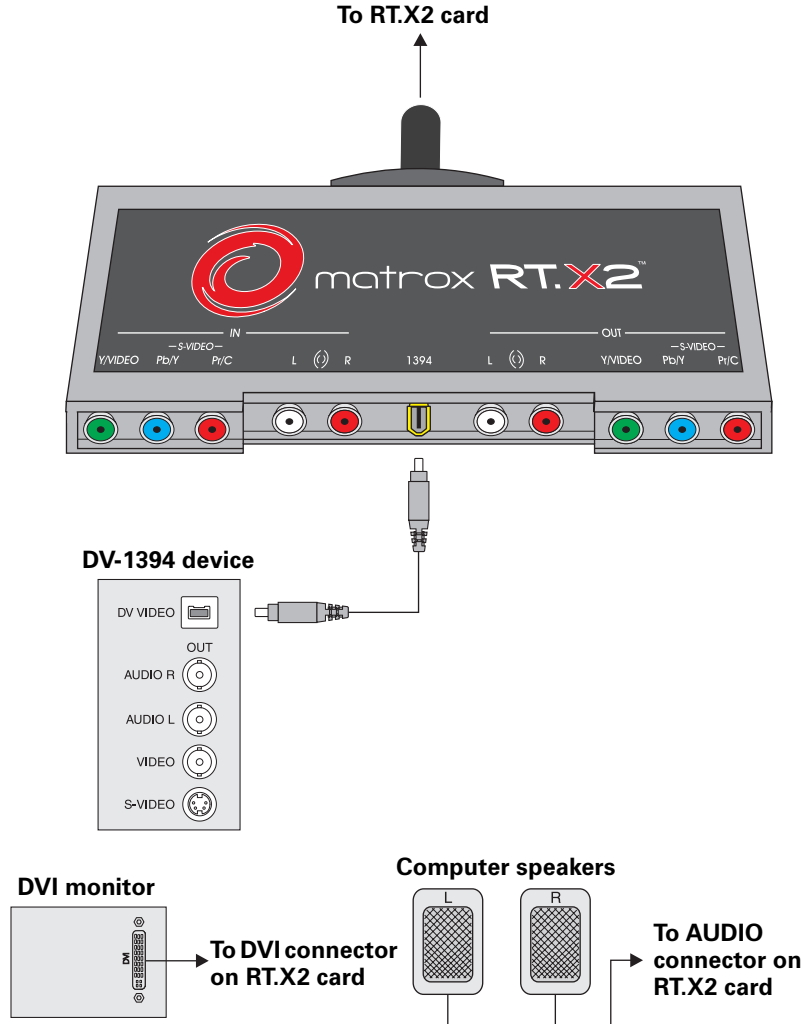
- 2 Plug the blue and green audio connectors (labeled TO AUDIO CARD IN and TO AUDIO CARD OUT) into the corresponding colored jacks on your sound card. If your computer speakers are connected to your sound card, unplug them from your sound card, then proceed to the next step.
- 3 To connect your computer speakers, simply plug the connector into the RT.X socket labeled AUDIO.
- 4 Connect the 1394 cable from the back of the RT.X2 breakout box to the 1394 port on your computer.

The following illustration shows the TO AUDIO CARD IN cable connected to the LINE IN of the sound card. However, you can also connect the cable to another input of your sound card, for example, AUX IN. Regardless of the input to which you've connected the TO AUDIO CARD IN cable, you must specify your analog audio input when defining your capture settings in order to capture analog audio. For information on defining your capture settings, see your *Matrox RT.X2 User Guide*.




DV-1394 connections

The following illustration shows how to connect your DV-1394 device to your Matrox RT.X2 system. For other typical connections, see your *Matrox RT.X2 Installation Manual*.



Installing your Matrox RT.X2 software


Once you've installed your Matrox RT.X2 hardware and properly connected your devices, you can proceed with the software installation.

- 1 Turn on your computer.
- 2 Once Windows restarts, the "Found New Hardware Wizard" will appear for each of your RT.X2 hardware components. Press **ESC** or click **Cancel** to close the "Found New Hardware Wizard."
-  **Important** Make sure that you close the "Found New Hardware Wizard" each time it appears.
- 3 Install Adobe Premiere Pro as explained in your Adobe documentation. You must install Adobe Premiere Pro on an NTFS-formatted drive (usually your system drive).
- 4 Install any programs for which a Matrox WYSIWYG plug-in is supported, such as Adobe After Effects and Adobe Photoshop.
- 5 Insert your Matrox RT.X2 installation DVD in your DVD-ROM drive.
- 6 From the Matrox RT.X2 menu, choose **Install Matrox Mx.tools** and follow the onscreen instructions.

For details on installing Matrox Mx.tools and other Matrox RT.X2 software, see your *Matrox RT.X2 Installation Manual*.

Registration and customer support

You can register your Matrox RT.X2 system in the Matrox RT.X2 Support section of our website at www.matrox.com/video/support. To go directly to the registration page, choose **Start > All Programs > Matrox Mx.tools > Register Your Matrox RT.X Product**.

-  **Important** Only registered users are entitled to customer support, software updates, access to our user forums, and special promotional offers.

Contacting us

Matrox is proud to offer worldwide customer support. Please use the Matrox RT.X2 contact information for your area as provided on our website at www.matrox.com/video/support.



www.matrox.com/video