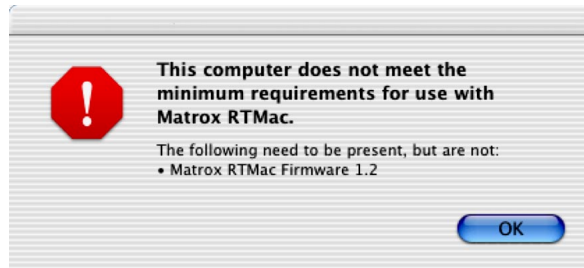


Do you need to install the Matrox RTMac Firmware 1.2?

The Matrox RTMac software for Mac OS X requires Matrox RTMac Firmware 1.2. Depending on when your Matrox RTMac card was manufactured, it may have an earlier version of the firmware. After installing the Matrox RTMac software and restarting your computer, you'll receive the following message if you need to run the firmware updater application in this folder:



Matrox RTMac Firmware 1.2 does not affect RTMac functionality in Mac OS 9.2. However, some versions of Mac OS 9.1 have a bug that make them incompatible with RTMac Firmware 1.2. Therefore, if you want to use Matrox RTMac in Mac OS 9, you must use OS 9.2 or later.



Important If your RTMac card has Firmware 1.0, you **will not** be able to boot in versions 10.2.x and earlier of OS X. Therefore, you'll need to reboot your computer in OS 9 and run the OS 9 version of the Firmware 1.2 updater. **If you have Firmware 1.0 and your computer boots in OS X only**, you can install your RTMac card in another system that can boot in OS 9, and use the OS 9 version of the Firmware 1.2 updater. You can then re-install the RTMac card in your OS X-only system. **If you don't have access to a system that can boot in OS 9**, please contact Matrox customer support for assistance. (See Appendix A, "Matrox RTMac Customer Support" in your *Matrox RTMac for Final Cut Pro Installation & User Guide* for the appropriate contact information.)

Remarks

- The firmware updater will run under different language versions of Mac OS.
- You **must** run the firmware updater from your hard disk, and **not** from the RTMac disk image or CD. When you copy the firmware updater to your hard disk, make sure that the full path to the application contains only **ASCII characters (A-Z, 0-9)**. If the path contains non-ASCII characters, the updater will become unstable when you attempt to launch it. (This is a bug in Mac OS X 10.2.x.) If you're unsure about the characters in the path to the location you copied the firmware updater, simply copy the application to the root of your hard drive.
- The RTMac breakout box does not need to be connected to your computer while you're updating the firmware. The firmware update applies to the RTMac card only.
- For your convenience, we've provided both OS X and OS 9 versions of the firmware updater. (The OS 9 version of the firmware updater can be found in the *Mac OS 9* folder of the Matrox RTMac disk image or CD.) If you previously updated to RTMac Firmware 1.2 under Mac OS 9, there's no need to update the firmware again for OS X. Similarly, if you update the firmware under OS X and want to use your RTMac card under OS 9, you do not need to perform the update again.
- You can update the RTMac firmware without having to install the RTMac drivers.