

Matrox RT

Release Notes

February 4, 2002



10757-401-0312

Trademarks • Marques déposées • Warenzeichen • Marchi registrati • Marcas registradas

Matrox Electronic Systems Ltd.	Matrox [®] , Flex 3D [™] , Matrox Disk Benchmark [™] , Matrox DVD Player [™] , Matrox MediaTools [™] , Matrox TurboDV [™] , Matrox Video Tools [™] , RT2000 [™] , RT2500 [™]
Matrox Graphics Inc.	DualHead [™] , Matrox Millennium [™] , Matrox G100 [™] , Matrox G200 [™] , Matrox G450 [™] , Matrox G550 [™] , Matrox PowerDesk [™]
Adobe Systems Inc.	Adobe [®] , After Effects [™] , Premiere [™]
Inscriber Technology Corporation	Inscriber [®] , TitleExpress [™]
Intel Corporation	Intel [®] , Pentium [™]
International Business Machine Corporation	IBM [®] , VGA [®]
Microsoft Corporation	Microsoft [®] , Windows [®] , DirectX [™] , Media Player [™]
Panasonic (Matsushita Electric Industrial Co.)	Panasonic [®] , DVCPRO [™]
Pixélan Software	Pixélan Software [™] , SpiceMaster [™]

Acrobat[®] Reader Copyright © 1987-2002 Adobe Systems Incorporated. All rights reserved. Adobe and Acrobat are trademarks of Adobe Systems Incorporated, which may be registered in certain jurisdictions.

• (English) All other nationally and internationally recognized trademarks and tradenames are hereby acknowledged. • (Français) Toutes les autres marques et tous les autres noms déposés reconnus nationalement ou internationalement sont également reconnus par les présentes. • (Deutsch) Alle sonstigen national und international bekannten Warenzeichen und Produktnamen werden hiermit anerkannt. • (Italiano) Eventuali altri nomi di prodotto menzionati in questo manuale sono dei proprietà di rispettivi produttori. • (Español) Por medio del presente se reconocen todas las demás marcas y nombres comerciales reconocidos a nivel nacional e internacional.

Copyright © 2002 Matrox Electronic Systems Ltd. • (English) All rights reserved. • (Français) Tous droits réservés. • (Deutsch) Alle Rechte vorbehalten. • (Italiano) Tutti i diritti riservati. • (Español) Reservados todos los derechos.

Disclaimer Matrox Electronic Systems Ltd. reserves the right to make changes in specifications at any time and without notice. The information provided by this document is believed to be accurate and reliable. However, no responsibility is assumed by Matrox Electronic Systems Ltd. for its use; nor for any infringements of patents or other rights of third parties resulting from its use. No license is granted under any patents or patent rights of Matrox Electronic Systems Ltd.

Unauthorized recording or use of broadcast television programming, video tape, or other copyrighted material may violate copyright laws. Matrox Electronic Systems Ltd. assumes no responsibility for the illegal duplication, use, or other acts that infringe on the rights of copyright owners.

Matrox Electronic Systems Ltd.

1055 St. Regis Blvd., Dorval, Quebec, Canada H9P 2T4

Tel: (514) 685-2630 Fax: (514) 685-2853 World Wide Web: www.matrox.com

Contents

About these release notes	1
What's new in Matrox Video Tools 3.1b?	1
Using the Matrox Configuration utility	3
Updated version of Adobe Premiere	4
Don't install Inscrber TitleExpress from the Adobe Premiere 6.0 CD	4
Avoiding potential TitleExpress and Adobe Premiere installation problems	4
Keep a record of your serial numbers	4
Service Pack 2 for Windows 2000 recommended	4
Installing Matrox Video Tools on a computer with Windows XP	5
Installing Matrox Video Tools on an RT2500 system with Windows XP	5
Installing Matrox Video Tools on an RT2000 system with Windows XP	8
Identification of DV-1394 devices in Windows XP	10
Installing Matrox Video Tools on a computer with Windows 98 SE	11
Installing Matrox Video Tools software on RT2500 with Windows 98 SE	11
Installing Matrox Video Tools software on RT2000 with Windows 98 SE	14
Upgrading from a previous version of Matrox Video Tools on RT2000 with Windows 98 SE	17
Changes to your Matrox RT2500 Installation and User Guide	18
Changes to your Matrox RT2000 Installation and User Guide	19
Additional fixes in Matrox Video Tools 3.1b	20
Matrox PRO Pack fixes.....	21
Last-minute operational limitations	22

Your notes

About these release notes

These release notes provide a list of new features and important last-minute information applicable to Matrox Video Tools version 3.1b. This information supplements the following manuals:

- ❑ *Matrox RT2000 Installation and User Guide* (March 30, 2001)
- ❑ *Matrox RT2500 Installation and User Guide* (March 30, 2001)



Note Matrox often releases software updates and Service Packs. To make sure that you have the latest available software for your Matrox RT system, check the Customer Support section of our web site at:

www.matrox.com/videoweb/support

What's new in Matrox Video Tools 3.1b?


Matrox Video Tools version 3.1b provides a number of updates and fixes to Matrox Video Tools, including all fixes and updates from Matrox Video Tools 3.1 and 3.1a. Here are the main features:

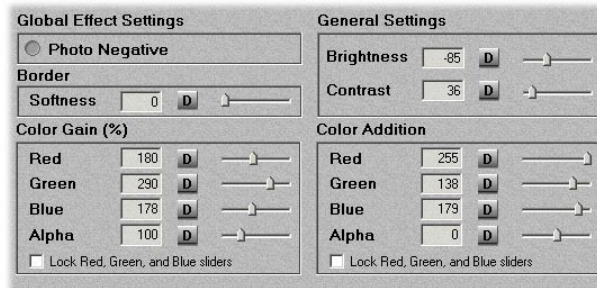
- ❑ **Multi-language support** You can choose to install Matrox Video Tools 3.1b in any of the following languages:
 - English
 - French
 - German
 - Italian
 - Japanese
 - Spanish

All the Matrox RT 3.1b dialog boxes and Help files will be displayed in the language that you choose.

- ❑ **Windows XP and Windows 98 SE support** Matrox Video Tools version 3.1b has been tested and approved for use with Windows XP, Windows 2000, Windows Me, and Windows 98 SE. For installation instructions related to Windows XP, see “[Installing Matrox Video Tools on a computer with Windows XP](#)” on page 5. For installation instructions related to Windows 98 SE, see “[Installing Matrox Video Tools on a computer with Windows 98 SE](#)” on page 11.
- ❑ **Matrox TurboDV export engine** Matrox TurboDV is a scalable software-based DV export engine that takes advantage of the power of your computer. On faster systems, you see faster DV exports — up to four times faster than with hardware rendering on some dual-processor systems. You can choose to perform either software-based or hardware-based DV rendering by running

the Matrox Configuration utility, as explained in “Using the Matrox Configuration utility” on page 3.

- ❑ **New Matrox audio mixer** To address problems on some systems regarding adjustments to the audio input levels of the Windows Volume Control, you’ll now see the Matrox Audio Mixer on your taskbar (), along with the Windows Volume Control (if enabled). With the Matrox Audio Mixer (blue speaker icon), you can adjust the level for playback or recording of your clips from the Timeline in Adobe Premiere. The Matrox Audio Mixer replaces the Matrox RT Mixer, and runs independently of the Windows Volume Control.
- ❑ **Independent display drivers** You can now choose to update the display driver for your Matrox display card (your main display card with an RT2500, or your secondary display card with an RT2000) with a newer version from the Matrox Graphics web site. For your convenience, we have included the most current version of these drivers on your Matrox RT 3.1b CD in the *MatroxDisplayDrivers* folder. Updating your Matrox display driver lets you use the latest PowerDesk features. With previous versions of Matrox Video Tools, you couldn’t update your Matrox display driver without causing conflicts with your Matrox RT system.
- ❑ **Intel Pentium 4 support** Recent generations of Intel Pentium 4 systems and motherboards are now compatible with Matrox RT2500. For your convenience, a stand-alone utility to test your Intel Pentium 4 to determine if its Intel 850 chipset is compatible for use with Matrox RT2500 is provided in the *Utilities* folder of your RT 3.1b CD or on our web site. For more information, see the **RT2500 System Recommendations** section of our support web site at: <http://www.matrox.com/videoweb/support>.
- ❑ **New colorization settings** The Matrox colorization video effect now has support for the **Transform** settings, and includes a **Border Softness** setting and an option to lock the **Red**, **Green**, and **Blue** sliders.



- ❑ **Additional MediaTools keyboard shortcuts** When the **Grab Image** dialog box is open, you can now use the following keyboard shortcuts: **F5 for Grab**, **F6 for Auto Save**, and **F7 for Save**.
- ❑ **Matrox G550 support** The Matrox G550 display card is now supported for use with Matrox RT2500. For information on installing a G550 card with an RT2500 and connecting the VIP ribbon cable, follow the instructions for the G450 card in the “Installing Your RT2500 and Connecting Your Devices” chapter of your *Matrox RT2500 Installation and User Guide*. For an updated list of the G550 drivers needed, see the **RT2500 System Recommendations** section of our support web site at: <http://www.matrox.com/videoweb/support>.

Using the Matrox Configuration utility

The Matrox Configuration utility is a small program that lets you assign various settings for use with your Matrox RT system. You can start it by choosing **Start > Programs > Matrox Video Tools > Matrox Configuration Utility**:



- ❑ **DV Rendering Mode** Your DV exports can be done using hardware- or software-based rendering. If you want to use software-based DV rendering, select **Use software (preview disabled)**. Software-based rendering is system dependent. This means that on a faster system, you can see faster DV exports. With software-based rendering, however, you’re not able to preview your video on your NTSC or PAL video monitor during a DV export. If you want to render using your Matrox RT hardware, which lets you preview your DV exports on your video monitor, select **Use hardware (preview enabled)**. This is the default DV rendering mode. You can switch modes while Premiere is running.



Note Unless you have a fast computer (that is, a processor speed of 700 MHz or more), you may find hardware-based DV rendering faster than using software-based DV rendering.

- ❑ **1394 Audio Capture** When capturing audio over the 1394 interface with certain DV devices (such as Sony or Canon), the left and right channels may be inverted in the resulting *.wav* file. If this happens, you can select **Invert left and right channels** to correct the problem. You can select this option while Premiere or MediaTools is running. In Premiere, you'll have to close and re-open the **Capture** window for the change to take effect.



Note The Matrox Configuration utility is provided in English only.

Updated version of Adobe Premiere

It is recommended that you update your Adobe Premiere 6.0 to version 6.01. You can obtain the Adobe Premiere 6.01 update from the *Premiere601Updater* directory on your RT CD. Make sure that you run the updater for the language that matches your version of Premiere.

Don't install Inscrber TitleExpress from the Adobe Premiere 6.0 CD

A version of Inscrber TitleExpress is included in the first installation menu when you insert the Adobe Premiere 6.0 CD. This is a **non-realtime version** of TitleExpress. Therefore, **do not install it**. Make sure you install TitleExpress from the Inscrber TitleExpress CD included in your RT2000 or RT2500 kit.

Avoiding potential TitleExpress and Adobe Premiere installation problems

When installing Adobe Premiere 6.0, it's recommended that you perform a **Typical** install. If you choose to perform a **Custom** install, make sure that you leave **Adobe Online** selected. This will avoid problems when you later install Inscrber TitleExpress from your TitleExpress CD.

Keep a record of your serial numbers

Take care not to discard the serial numbers provided with your bundled third-party software. You usually need these numbers when you install the software, and also when requesting software upgrades. It's a good idea to write down all your serial numbers and keep them in a safe place so that you can easily refer to them when needed.

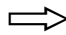
Service Pack 2 for Windows 2000 recommended

If you use Windows 2000 with your Matrox RT system, we recommend that you install Service Pack 2 for Windows 2000. You can download this service pack from the Microsoft web site at: www.microsoft.com.

Installing Matrox Video Tools on a computer with Windows XP

The following sections describe how to install Matrox Video Tools 3.1b on a Windows XP system. Please follow the instructions based on your system needs.

Installing Matrox Video Tools on an RT2500 system with Windows XP

 **Important** If you want to upgrade your existing operating system to Windows XP, or you want to replace your Matrox display card, **you must uninstall Matrox Video Tools and remove your RT2500 hardware**, then follow the steps below:

Installing the software



Note Please make sure that no 1394 devices are connected to your computer while installing Windows XP or Matrox Video Tools.

- 1 Make sure you've prepared your computer as instructed in your *RT2500 Installation and User Guide*. This includes:
 - Preparing your system.
 - Plan your storage configuration and install your devices.
 - Install Windows XP as explained in its documentation.
 - Configure your main display card for a resolution of 1024×768 with 16- or 32-bit color.
 - Install Adobe Premiere 6.0.
 - Installing your RT2500 card and connecting your devices.
- 2 Turn on your computer and insert the Matrox RT2500 installation CD in your CD-ROM drive.
- 3 Once Windows restarts, it detects the **Video Controller** (that is, your Matrox RT2500 card) and installs it as a Matrox Millennium G400/G450-Series card.



Note When you install Matrox Video Tools 3.1b, the driver will be updated to the Matrox RT2500 driver. You can verify later that the driver has been installed by right-clicking **My Computer**, then choosing **Properties > Hardware > Device Manager > Display adapters**.

- 4 Windows then detects the **1394 Host Controller** on your RT2500. Windows automatically installs the necessary drivers for this device.
- 5 Windows now detects a new **Multimedia Controller**. This is the DV/MPEG Codec processor on your RT2500.

- a When the **Found New Hardware Wizard** appears, be sure to select **Install the software automatically (Recommended)**, then click **Next**.



- b The search finds the **Matrox DV/MPEG Codec driver** and prompts you to accept this choice. Click **Next** to continue.



Note Depending on your driver signing options (selected when you right-click **My Computer > Properties > Device Manager > Driver Signing**), throughout the installation, Windows may display messages informing you that the software you are about to install has not passed Windows logo testing. Click **Continue Anyway** to continue the installation.

- c Click **Finish**, then **Yes** to restart your computer.

- 6 Leave your Matrox RT2500 CD in your CD-ROM drive. Windows automatically starts the Matrox Video Tools Setup program, which installs Microsoft DirectX and various other essential RT2500 software components. Follow the onscreen instructions to complete the Matrox Video Tools installation.
- 7 When the Matrox Video Tools software installation is complete, Setup offers you a choice of installing the Pixélan SpiceMaster demo, installing the RT wallpaper as your default desktop wallpaper, and viewing the Matrox RT Readme file. Choose the items you want and follow the onscreen instructions.
- 8 You'll be prompted to restart your computer for the changes to take effect. Click **Yes** to restart.



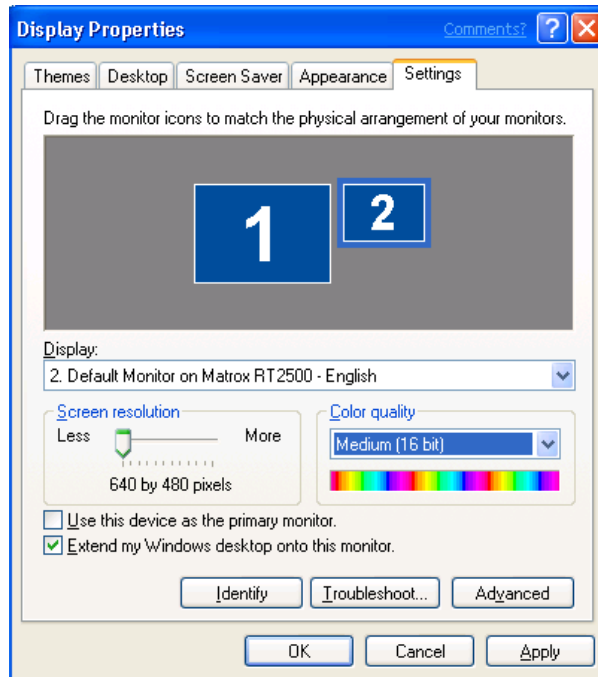
Note If your computer does not restart automatically, shut down your system and restart it yourself.

Setting your RT2500 display properties

After you restart your system, Matrox Video Tools Setup will prompt you to set your Matrox RT2500 display properties.

⇒ **Important** You **must** follow these instructions carefully if your system is to work correctly.

- 1 After reading the onscreen instructions, click **OK** to open the **Display Properties** dialog box.
- 2 Under **Display**, select your Matrox RT2500.
- 3 Make sure that the following settings are applied:
 - **Color quality** set to **Medium (16 bit)**.
 - **Screen resolution** set to **640 by 480** pixels.
 - **Extend my Windows desktop onto this monitor** is selected.



- 4 Click **OK** and restart your computer for the settings to take effect.

Completing the installation

- 1 The Matrox Disk Benchmark program starts after your computer restarts. This program tests the speed of your hard drives and reports the results. For

details on using this program, see your *Matrox RT2500 Installation and User Guide*.

- 2 When you've finished testing your hard drives, you can install other software that came with your RT2500 kit.

Installing Matrox Video Tools on an RT2000 system with Windows XP

If you're installing Matrox Video Tools on an RT2500 system, see "[Installing Matrox Video Tools on an RT2500 system with Windows XP](#)" on page 5.



Important If you want to upgrade your existing operating system to Windows XP, **you must uninstall Matrox Video Tools and remove your RT2000 hardware**, then follow the steps below:

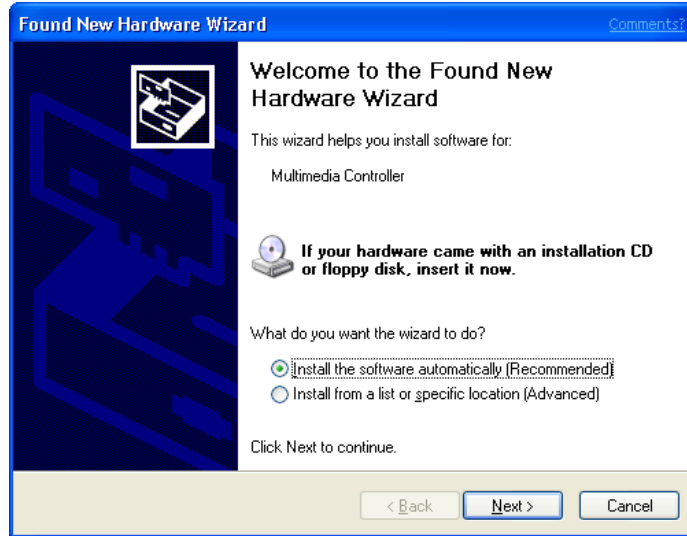
Installing the software



Note Please make sure that no 1394 devices are connected to your computer while installing Windows XP or Matrox Video Tools.

- 1 Make sure you've prepared your computer as instructed in your *RT2000 Installation and User Guide*. This includes:
 - Preparing your system.
 - Plan your storage configuration and install your devices.
 - Install Windows XP as explained in its documentation.
 - Install Adobe Premiere 6.0.
 - Installing your RT2000 card and connecting your devices.
- 2 Turn on your computer and insert the Matrox RT2000 installation CD in your CD-ROM drive.
- 3 Windows detects the **1394 Host Controller** on your RT2000. Windows automatically installs the necessary drivers for this device.
- 4 Next Windows detects a new **Multimedia Controller**. This is the DV/MPEG Codec processor on your RT2000.

- a When the **Found New Hardware Wizard** appears, be sure to select **Install the software automatically (Recommended)**, then click **Next**.



- b The search finds the **Matrox DV/MPEG Codec driver** and prompts you to accept this choice. Click **Next** to continue.



Note Depending on your driver signing options (selected when you right-click **My Computer > Properties > Device Manager > Driver Signing**), throughout the installation, Windows may display messages informing you that the software you are about to install has not passed Windows logo testing. Click **Continue Anyway** to continue the installation.

- c Click **Finish**, then **Yes** to restart your computer.

- 5 Leave your Matrox RT2000 CD in your CD-ROM drive. Windows automatically starts the Matrox Video Tools Setup program, which installs the Millennium Flex 3D Edition display card driver, Microsoft DirectX, and various other essential RT2000 software components. Follow the onscreen instructions to complete the Matrox Video Tools installation.
- 6 When the Matrox Video Tools software installation is complete, Setup offers you a choice of installing the Pixélan SpiceMaster demo, installing the RT wallpaper as your default desktop wallpaper, and viewing the Matrox RT Readme file. Choose the items you want and follow the onscreen instructions.
- 7 You'll be prompted to restart your computer for the changes to take effect. Click **Yes** to restart.



Note If your computer does not restart automatically, shut down your system and restart it yourself.

Completing the installation

- 1 The Matrox Disk Benchmark program starts after your computer restarts. This program tests the speed of your hard drives and reports the results. For details on using this program, see your *Matrox RT2000 Installation and User Guide*.
- 2 When you've finished testing your hard drives, you can install other software that came with your RT2000 kit.

Identification of DV-1394 devices in Windows XP

To verify that your DV-1394 device is properly recognized in Windows XP, right-click **My Computer**, then choose **Properties**. Under **Hardware**, click **Device Manager**. Your DV-1394 device should be listed under **Sound, video and game controllers**.

If your DV-1394 device is listed under **Network adapters** or **Imaging devices**, it may be because you connected your device to your computer prior to installing Matrox Video Tools. In this case, you may encounter problems using your device with the Matrox realtime plug-in, and you'll need to take the following steps to install the correct DV-1394 drivers.

➤ Follow these steps to allow for proper Windows XP recognition:

- 1 Connect and turn on your DV-1394 device.
- 2 Run *DVConnect334XP.exe* to install the correct DV-1394 drivers. This file can be found on your Matrox RT 3.1b CD-ROM in the *Support/DV1394/WinXP* folder.



Note If you try to run *DVConnect334XP.exe* after it has already been installed, it will first uninstall the DV-1394 drivers. Once the uninstall is complete, you can run *DVConnect334XP.exe* again to install the correct drivers.

- 3 Verify that your DV-1394 device is now listed under **Sound, video and game controllers** in the **Device Manager**.

If these instructions do not solve your problem, you may find other useful suggestions in the **Common Issues and Solutions** section of the Matrox RT2500/RT2000 User Forums at www.matrox.com/videweb/support.

Installing Matrox Video Tools on a computer with Windows 98 SE

The following sections describe how to install Matrox Video Tools on a Windows 98 SE system. Please follow the instructions based on your system needs.

Installing Matrox Video Tools software on RT2500 with Windows 98 SE

Installing the software

This section explains how to install Matrox Video Tools 3.1b on a computer with a new installation of Windows 98 SE. You'll need your Matrox RT2500 3.1b CD and your Windows 98 SE installation CD.



Note Please make sure that no 1394 devices are connected to your computer during the Matrox Video Tools Setup process.

- 1 Make sure you've prepared your computer as instructed in your *Matrox RT2500 Installation and User Guide*. This includes:
 - Preparing your system.
 - Plan your storage configuration.
 - Install Windows 98 SE.
 - Make sure your main display is configured for a resolution of 1024x768 with 16- or 32-bit color.
 - Install Adobe Premiere.
 - Installing your RT2500 card and connecting your devices.
- 2 Turn on your computer and insert the Matrox RT2500 3.1b CD in your CD-ROM drive. Windows detects new hardware when you restart.
- 3 Windows reports finding a “Standard PCI Graphics Adapter (VGA).” This is the advanced graphic chipset on your RT2500.
- 4 When the “Add New Hardware Wizard” starts, click **Next** to start the wizard and then **Next** again when prompted to search for a driver.
 - a When the wizard prompts you to select locations for its search, select **CD-ROM drive**, then click **Browse** to point to the following file on your RT 3.1b CD:
Support\G400Flex3D\Win98Me\Install.inf.
 - b The search locates the driver and prompts you to accept this choice. Click **Next** to continue.
 - c Click **Finish** and then **Yes** to restart your computer.



- 5 If you have a Plug-and-Play monitor, Windows may detect it when your computer restarts. Follow the onscreen instructions to install the required driver.
- 6 Windows now detects a new “PCI Multimedia Device” (that is, your RT2500 codec card). The “Add New Hardware Wizard” starts again so that you can install the required driver.
- 7 Click **Next** to start the wizard and then **Next** again when prompted to search for a driver.
- 8 When the wizard prompts you to select locations for its search, select **CD-ROM drive** so that Windows can find the RT2500 codec card software on your RT2500 3.1b CD.



- 9 Click **Next** to start the search for the driver on the CD-ROM drive.
- 10 The search locates the RT2500 driver and prompts you to accept this choice. Click **Next** to continue. After Windows copies the necessary files to your computer, click **Finish** to continue. Your system will restart.
- 11 Windows now detects your “1394 Host Controller.”
 - a Insert your Windows 98 SE CD in your CD-ROM drive.
 - b When the “Add New Hardware Wizard” starts, click **Next** to start the wizard and then **Next** again when prompted to search for a driver.
 - c When the wizard prompts you to select locations for its search, make sure all the available location check boxes are **not** selected. This restricts the search to the Windows driver database.



- 12 The wizard may detect several newer files, but it is recommended that you keep all existing files. Click **Yes** each time you are prompted to keep existing files. After the system copies the files, click **Finish**. Your system will restart.
- 13 When prompted, re-insert your Matrox RT2500 3.1b CD in your CD-ROM drive. Windows automatically starts the Matrox Video Tools Setup program, which installs Microsoft DirectX, the realtime plug-in for Adobe Premiere,

and various other essential RT2500 software components. Follow the onscreen instructions.

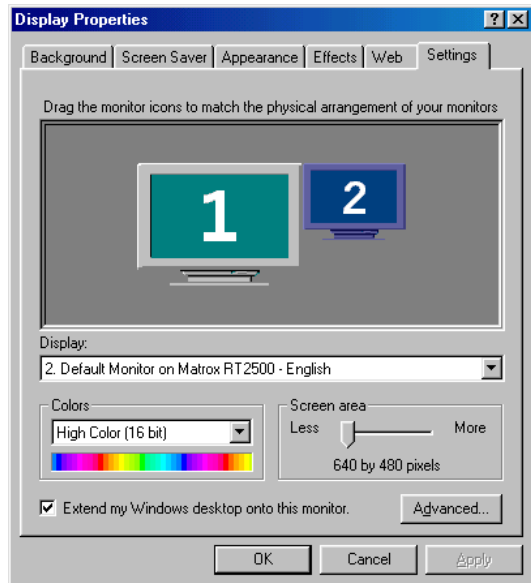
- 14 When the Matrox Video Tools installation is complete, Setup offers you a choice of installing the Pixélan SpiceMaster demo, installing the RT wallpaper as your default desktop wallpaper, and viewing the Matrox RT Readme file. Choose the items you want and follow the onscreen instructions.
- 15 You'll be prompted to restart your computer for the changes to take effect.

Setting your RT2500 display properties

After you restart your system, your RT2500 Flex 3D driver will prompt you to set your Matrox RT2500 display properties.

⇒ **Important** You **must** follow these instructions carefully if your system is to work correctly.

- 1 After reading the onscreen instructions, click **OK** to open the **Display Properties** dialog box.
- 2 Under **Display**, select your Matrox RT2500.
- 3 Make sure that the following settings are applied:
 - **Colors** set to **High Color (16 bit)**.
 - **Screen area** set to **640x480** pixels.
 - **Extend my Windows desktop onto this monitor** is selected.



- 4 Click **OK** and restart your computer for the settings to take effect.

Completing the installation

- 1 The Matrox Disk Benchmark program starts after your computer restarts. This program tests the speed of your hard drives and reports the results.
- 2 When you've finished testing your hard drives, you can install other software that came with your RT2500 kit.

Installing Matrox Video Tools software on RT2000 with Windows 98 SE

This section explains how to install Matrox Video Tools 3.1b on RT2000 with a new installation of Windows 98 SE. You'll need your Matrox RT2000 3.1b CD and your Windows 98 SE installation CD.



Note Please make sure that no 1394 devices are connected to your computer during the Matrox Video Tools Setup process.

1 Make sure you've prepared your computer as instructed in your Matrox *RT2000 Installation and User Guide*. This includes:

– Preparing your system.

- Plan your storage configuration and install your devices.
- Install Windows 98 SE.
- Install Adobe Premiere.

– Installing your RT2000 card set and connecting your devices.

2 Turn on your computer and insert the Matrox RT2000 3.1b CD in your CD-ROM drive. Windows detects new hardware when you restart.



Important If you installed your G400 Flex 3D card in a new system, skip to step 4.

3 Windows reports finding a “Standard PCI Graphics Adapter (VGA),” even though you have an AGP card.



Caution If your system previously used an older Matrox G-series card (G100 or G200), you may be prompted to insert a disk to install another version of the Matrox G400 drivers. Simply click **OK** and then **Cancel** when prompted to provide a path to the file. This will allow you to continue the installation in standard VGA mode. Matrox Video Tools Setup will install the proper driver for your display card later in the process. **Do not** try to manually install driver files from your RT2000 CD. Doing so will cause software conflicts.

a When the “Add New Hardware Wizard” starts, click **Next** to start the wizard and then **Next** again when prompted to search for a driver.

b When the wizard prompts you to select locations for its search, make sure all the location check boxes are **not** selected.

This restricts the search to the standard VGA driver that's already running.

- Floppy disk drives
- CD-ROM drive
- Microsoft Windows Update
- Specify a location:

c The search finds the standard VGA driver and prompts you to accept this choice. Click **Next** to continue.

d Click **Finish** and then **Yes** to restart your computer.

- 4 If you have a Plug-and-Play monitor, Windows may detect it when your computer restarts. Follow the onscreen instructions to install the required driver.
- 5 Windows now detects a new “PCI Multimedia Device” (that is, your RT2000 codec card). The “Add New Hardware Wizard” starts again so that you can install the required driver.
- 6 Click **Next** to start the wizard and then **Next** again when prompted to search for a driver.
- 7 When the wizard prompts you to select locations for its search, select **CD-ROM drive** so that Windows can find the RT2000 codec card software on your RT2000 3.1b CD.

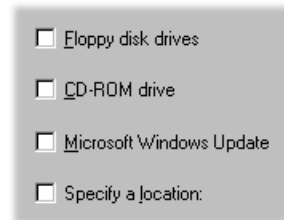


- 8 Click **Next** to start the search for the driver on the CD-ROM drive.
- 9 The search locates the RT2000 driver and prompts you to accept this choice. Click **Next** to continue. After Windows copies the necessary files to your computer, click **Finish** to continue. Your system will restart.
- 10 Windows now detects your “1394 Host Controller.”


a Insert your Windows 98 SE CD in your CD-ROM drive.

b When the “Add New Hardware Wizard” starts, click **Next** to start the wizard and then **Next** again when prompted to search for a driver.

c When the wizard prompts you to select locations for its search, make sure all the available location check boxes are **not** selected. This restricts the search to the Windows driver database.

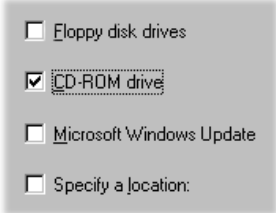


- 11 The wizard may detect several newer files, but it is recommended that you keep all existing files. Click **Yes** each time you are prompted to keep existing files. After the system copies the files, click **Finish** to continue. Your system will restart.

- 12 When prompted, re-insert your Matrox RT2000 3.1b CD in your CD-ROM drive. Windows automatically starts the Matrox Video Tools Setup program, which installs the Millennium Flex 3D Edition display card driver, Microsoft DirectX, the realtime plug-in for Adobe Premiere, and various other essential RT2000 software components. Follow the onscreen instructions.
 - 13 When the Matrox Video Tools installation is complete, Setup offers you a choice of installing the Pixélan SpiceMaster demo, installing the RT wallpaper as your default desktop wallpaper, and viewing the Matrox RT Readme file. Choose the items you want and follow the onscreen instructions.
 - 14 You'll be prompted to restart your computer for the changes to take effect.
-  **Note** Upon restarting, your display will be configured to use the Millennium Flex 3D Edition display at a resolution of 1024×768 pixels.
- 15 The Matrox Disk Benchmark program starts after your computer restarts. This program tests the speed of your hard drives and reports the results.
 - 16 When you've finished testing your hard drives, you can install other software that came with your RT2000 kit.

Upgrading from a previous version of Matrox Video Tools on RT2000 with Windows 98 SE

⇒ **Important** Before you can install the new version of Matrox Video Tools, you must uninstall any previous version from your computer. You can do this by choosing **Start > Programs > Matrox Video Tools > Uninstall**. If you attempt to install the new version without first uninstalling the previous version, you'll be prompted to perform the uninstall.

- 1 Remove the following devices from the Windows Device Manager (to access the Device Manager, right-click the **My Computer** icon, choose **Properties** and click the Device Manager tab):
 - MatroxMMedia: Matrox RT2000Loader.
 - Sound Video and Game controllers: RT2000.
- 2 Shut down and restart your computer.
- 3 Windows now detects a new “PCI Multimedia Device” (that is, your RT2000 codec card). The “Add New Hardware Wizard” starts, so that you can install the required driver.
 - a Click **Next** to start the wizard and then **Next** again when prompted to search for a driver.
 - b Insert the RT2000 3.1b CD in your CD-ROM drive.
 - c When the wizard prompts you to select locations for its search, select **CD-ROM drive** so that Windows can find the RT2000 codec card software on your RT2000 3.1b CD.
 
 - d Click **Next** to start the search for the driver on the CD-ROM drive.
 - e The search locates the RT2000 driver and prompts you to accept this choice. Click **Next** to continue, and then **Next** to install the driver. After Windows copies the necessary files to your computer, click **Finish**.
- 4 You must now restart your computer as prompted before continuing the installation. Click **Yes** to restart your computer.
- 5 After re-starting, Windows automatically starts the Matrox Video Tools Setup program, which updates your Millennium Flex 3D Edition display card driver, Microsoft DirectX, and various other essential RT2000 software components. Follow the onscreen instructions.
- 6 When the Matrox Video Tools installation is complete, Setup offers you a choice of installing the Pixelan SpiceMaster demo, installing the RT

wallpaper as your default desktop wallpaper, and viewing the Matrox RT Readme file. Choose the items you want and follow the onscreen instructions.

- 7 You'll be prompted to restart your computer for the changes to take effect.
- 8 The Matrox Disk Benchmark program starts after your computer restarts. This program tests the speed of your hard drives and reports the results.
- 9 When you've finished testing your hard drives, you can install other software that came with your RT2000 kit.

Changes to your Matrox RT2500 Installation and User Guide

The following are changes to the *Matrox RT2500 Installation and User Guide* (dated March 30, 2001):

- In the section “**Installing Matrox Video Tools on a computer with Windows Me**” on pages 44-45, replace steps 6 and 7 in section **1. Installing the software** with:
Windows finds the files on your CD-ROM and copies the necessary files to your computer. Click **Finish**.
- Disregard the section “**Using Windows Volume Control with the Matrox RT Mixer**” on pages 59-61. The Matrox RT Mixer is now replaced with the Matrox Audio Mixer (blue speaker icon) on your taskbar.
- In Chapter 10, "Using the Matrox File Converter," the note on page 173 about supported file sizes applies only if you're using Windows Me or Windows 98 SE. These limitations do not apply if you're using Windows XP or Windows 2000.
- In Chapter 11, “Using Inscriber TitleExpress,” the correct method of starting TitleExpress once in Premiere should be:
by choosing **File > New > Inscriber TE RT Title**.
- In Chapter 14, “RT2500 Troubleshooting,” under **Installation/configuration** on page 197, Possible cause 2 and Solution 2 for the entry **Wrong color balance, screen image off-center, or no picture at all** should be:
Possible cause 2 **Your monitor may not be properly connected.**
Solution 2 **Check VGA cable connection to computer** Make sure the connector to your display card is firmly in place, and that the pins on the connector are not damaged.
- In Chapter 14, “RT2500 Troubleshooting,” under **Using Adobe Premiere** on page 202, for the entry **Adobe Premiere displays error message “Could**

not load Matrox RT Plug-in” after installing Matrox Video Tools, disregard Possible cause 1 “Check VIP ribbon cable connection”.

- ❑ In Chapter 14, “RT2500 Troubleshooting,” under **Audio Issues** on page 207, for the entry **Sound doesn’t capture or print to tape, video files play back with no sound, or sound output is distorted or too loud**, step 4 to the Solution for Possible cause 2 should be:

For each of the controls (**Line-in, Microphone**, etc.) make sure the **Volume** slider levels are okay (if you’re not sure, try half level), and that the **Mute** check boxes are cleared.

- ❑ In Chapter 14, “RT2500 Troubleshooting,” under **Audio Issues** on pages 207-208, for the entry **Sound doesn’t capture or print to tape, video files play back with no sound, or sound output is distorted or too loud**, disregard Possible cause 4 “RT Mixer settings muted.”

Changes to your Matrox RT2000 Installation and User Guide

The following are changes to the *Matrox RT2000 Installation and User Guide* (dated March 30, 2001):

- ❑ Disregard the section “**Using Windows Volume Control with the Matrox RT Mixer**” on pages 73-75. The Matrox RT Mixer is now replaced with the Matrox Audio Mixer (blue speaker icon) on your taskbar.
- ❑ In Chapter 11, "Using the Matrox File Converter," the note on page 187 about supported file sizes applies only if you're using Windows Me or Windows 98 SE. These limitations do not apply if you're using Windows XP or Windows 2000.
- ❑ In Chapter 12, “Using Inscrber TitleExpress,” the correct method of starting TitleExpress once in Premiere should be:
by choosing **File > New > Inscrber TE RT Title**.
- ❑ In Chapter 16, “RT2000 Troubleshooting,” under **Audio Issues** on page 234, for the entry **Sound doesn’t capture or print to tape, video files play back with no sound, or sound output is distorted or too loud**, step 4 to the Solution for Possible cause 2 should be:
For each of the controls (**Line-in, Microphone**, etc.) make sure the **Volume** slider levels are okay (if you’re not sure, try half level), and that the **Mute** check boxes are cleared.
- ❑ In Chapter 16, “RT2000 Troubleshooting,” under **Audio Issues** on pages 234-235, for the entry **Sound doesn’t capture or print to tape, video files**

play back with no sound, or sound output is distorted or too loud,
disregard Possible cause 4 “RT Mixer settings muted.”

Additional fixes in Matrox Video Tools 3.1b

The following are last-minute fixes that are in addition to those listed in the Matrox RT Readme for Matrox Video Tools version 3.1 (choose **Start > Programs > Matrox Video Tools > Readme**):

- ❑ Using Premiere’s Batch Processing utility to convert graphics files to *.avi* files no longer results in Premiere crashing. (Ref# 24727)
- ❑ Batch capturing a number of DVCPRO PAL clips in Premiere no longer results in corrupted files. (Ref# 24801)
- ❑ False disk full errors in Premiere when exporting to MPEG-2 I-frame format no longer occur. (Ref# 24799)
- ❑ Pressing the **Play** button in MediaTools at the end of clip will now start playing from the beginning of the clip. (Ref# 24748)
- ❑ Matrox MPEG-2 I-frame *.avi* files now play correctly in Windows Media Player. (Ref# 24154)
- ❑ Importing an Inscrber *.icg* file into Premiere that is not full-screen resolution no longer results in a corrupted file or your system becoming unstable. (Ref# 24910)
- ❑ When performing a **Scan/Capture** in MediaTools, there is no longer a problem with the first frame of a clip being the same as the last frame of the previous clip. (Ref# 24874)
- ❑ The **Show volume control on the taskbar** option in the **Sounds and Multimedia** dialog box being grayed is no longer being dimmed. (Ref# 25273)
- ❑ To improve stability of your RT system, the **Accelerated graphics transfer** option in the **Matrox General Settings** dialog box will be cleared by default for the following system configurations:
 - On an RT2500 system running Windows 98 SE or Windows Me with an Intel 815, 820, 840, or 850 chipset.
- ❑ On a PAL system, the **Analog Setup (NTSC)** setting for IRE levels is now unavailable in the **Matrox General Settings** dialog box. (Ref# 25218)
- ❑ The version number now displays correctly when installing the Matrox VFW software codecs on a system without the RT hardware. (Ref# 25230)
- ❑ A single-frame *.tga* grabbed from MediaTools now works correctly in Premiere if an alpha channel key is applied to it. (Ref# 25272)

- ❑ When using Matrox MediaTools to **Scan/Capture** a number of DVCPRO clips, the problem of the first clip being captured to DVCPRO format, while subsequent clips are captured to DV/DVCAM format, has been fixed. (Ref# 25400)
- ❑ The problem of system freezes when capturing on a dual-processor system has been fixed. (Ref# 25464)
- ❑ Standard Windows *.avi* (OpenDML-compliant) files created with your Matrox RT system are now compatible with applications that support OpenDML files, such as Windows Media Player 7, Adobe After Effects 5.0, and VirtualDub. (Ref# 25571)
- ❑ The intermittent problem of black flashes appearing when playing a project with Inscrber *.icg* files from the Premiere Timeline on certain systems, has been fixed. (Ref# 23851 & 24991)
- ❑ Improvements have been made so that you'll no longer see jitters when Premiere is loading or while scrubbing, on certain PAL systems. (Ref# 25523)
- ❑ The stability of the Matrox realtime plug-in has been improved to reduce freezes in Premiere, such as when starting Premiere more than once in a short time span. (Ref# 25743, 25689, & 25690)

Matrox PRO Pack fixes

The following fixes apply to the Matrox PRO Pack for Matrox RT systems:

- ❑ The **Angle** control in the **Custom Page Curls** dialog box is now giving the correct value when using the slider. (Ref# 25589)
- ❑ The **Create Icon** button in the **Custom Mask** dialog box is now working properly. (Ref# 25515)
- ❑ Changes made to the **Mask**, **Transform**, and **Crop** tracks with a **Mask** set to **None** will now display properly on your clips. (Ref# 25565)
- ❑ Applying an Alpha Channel key effect to a clip with a Matrox mask effect set to **None** will no longer freeze Premiere. (Ref# 25574)

Last-minute operational limitations

The following operational limitations are in addition to those listed in the Matrox RT Readme for Matrox Video Tools version 3.1 (choose **Start > Programs > Matrox Video Tools > Readme**):

- ❑ On a PAL system, you may experience dropped frames if you apply a Matrox distortion effect to a clip on the Timeline that is below a graphics clip with an alpha channel applied to it. To avoid this problem, you can use the **Force Render** option from the **Distortions** dialog box. (Ref# 24427)
- ❑ Premiere's **Replace Clips** utility doesn't work with Inscrber *.icg* files. (Ref# 25237)
- ❑ When using a Matrox dual-head display card in your Matrox RT system, the independent monitor adjustment Multi-Display controls are not supported. To be able to see the Premiere **Monitor** or **Preview** window on your second monitor, you must set the resolution and color display settings on your secondary monitor to the same as your primary monitor. (Ref# 25195)
- ❑ If you move a Premiere project with Inscrber *.icg* files that you created using Matrox Video Tools 2.0, make sure you keep the same directory structure for the project at the new location. Otherwise, Premiere will be unable to use your Inscrber *.icg* files. (Ref# 25395)
- ❑ To avoid stability problems in Inscrber TitleExpress and Adobe Premiere, don't use invalid characters, such as \ (backslash), when naming *.icg* files. (Ref# 25466)
- ❑ When installing the Japanese version of Matrox Video Tools, you may receive an error message concerning the file *msvcrt40.dll*. Click **OK**, then maximize the Pixélan window from the taskbar to continue with the installation. (Ref# 25488)
- ❑ When using the Italian version of the Matrox Video Player, the keyboard shortcut to open a file is **CTRL+O**, and not **CTRL+A**, as shown in the program's menu. (Ref# 25520)
- ❑ If you have a non-realtime segment on your Adobe Premiere Timeline (identified by a red line above the time ruler), and you start a new project (choose **File > New Project**), you may notice that the red line remains on your new Timeline. Once you drag a clip to the Timeline, however, the red line disappears. (Ref# 25631)
- ❑ In Adobe Premiere, when importing a file by choosing **File > Import > File**, you'll see **AVI Movie (*.avi)** twice under **Files of type**. Either one works correctly if chosen. (Ref# 25632)
- ❑ Your computer may become unstable if you change any display properties while Adobe Premiere is open. (Ref# 25648)

- ❑ When installing RT2000 on a Windows 2000 system, the Matrox Video Tools Setup program may start while the Windows “Add New Hardware Wizard” is still detecting your hardware. Simply **ALT+TAB** back to the “Add New Hardware Wizard”, and when Windows has completed detecting your new hardware, you can continue with the Matrox Video Tools Setup. (Ref# 25644)
- ❑ Changing the **Video Source** in the **Matrox Video Input Settings** dialog box (choose **Project > Project Settings > Capture > Video Input**) while working on a Premiere project, may result in the loss of video on your NTSC or PAL video monitor, as well as in your **Monitor** window. Once you select an available **Video Source**, then click **OK** to close the dialog box, the video display will return. (Ref# 25653)
- ❑ If you have clips with Matrox video effects on a Timeline with a Zero Point other than 00:00:00:00, you won’t see your clips in the **Preview Window** of the **Matrox Effect Setup** dialog box. (Ref# 25687)
- ❑ When capturing DV material using DV-1394 device control, you won’t be able to hear the audio you’re capturing by connecting the audio output from your DV-1394 device to the audio input of your RT breakout cable. Instead, you can monitor the audio from the device’s built-in speaker (if present), or connect the audio output directly to external speakers. (Ref# 25886)



www.matrox.com/video